

[The Write Place at the Write Time](#)

[Home](#)

[About Us](#)

[Announcements](#)

[Insights of Interviewees](#)

[Fiction](#)

[Poetry](#)

["Our Stories" non-fiction](#)

[Writers' Craft Box](#)

[Submission Guidelines](#)

[Feedback & Questions](#)

[Artists' Gallery](#)

[Indie Bookstores](#)

[Literary Arts Patrons](#)

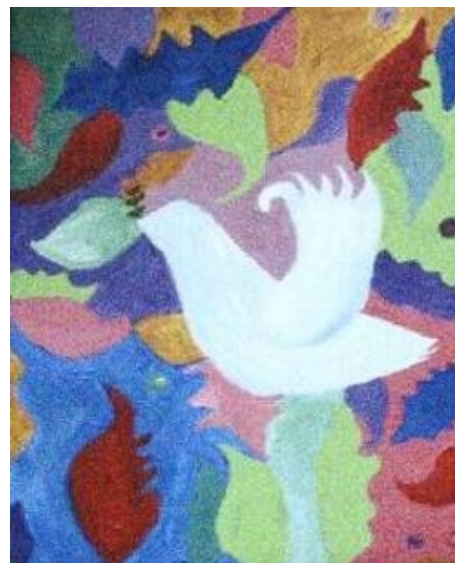
[Scrapbook of Eight Years](#)

[Archives](#)

[Inscribing Industry Blog](#)

Come in...and be captivated...

Welcome to ***the write place at the write time***. Imagine that you are seated comfortably in a chic café with the décor of your choice. In the time it takes you to consume the generous warm mug of coffee or tea cradled between your hands, you can step into another world, abandon your senses and delve into another space and time. You do this by allowing a mysterious stranger to pull up a chair across from you and tell you a story. Close your eyes, listen to the words in your mind and be swept away...



"Peace" NMB Copyright 2007

The Winter–Spring Issue

Words have a power. They define who a country is, how a faith chooses to believe, what an age in history means to the present. Words can build and heal. Words can destroy and harm. Words can be wonderful or formidable things. How we use them is how they come to define us. To use their might well, requires responsibility and respect for what, exactly, they mean, and for what, exactly, they can do. Everyone on this earth has a role in contributing to its story. We think of Whitman's answer in "O Me! O Life!" as a call and a remedy. It is time to claim our identity and decide how our contribution to the ever-evolving text of our time will read.

We have the opportunity to work together to forge a new chapter—an alternative to the headlines that tell of painful discord dividing the heart of a nation into halves of red and blue with a purpled bruise down the center of the soul of its citizens and those affected abroad. This is about people, not politics. This is about humanity and finding ways forward, expressing, listening, understanding.

Every choice, every word, every deed of every individual has an impact. Another line appears on the page where there had been a blank space, causing a shift in the shared human trajectory of this tale we're living. On scales large and small, it all matters. The world needs every courageous, compassionate soul to keep contributing, creating. May we remember that as much as we are creators, we are choosers. Let us be deliberate in our choices—not just those we make once, but those we renew as vows each day to influence the larger story. May it be conscious creation with conscience.

For our small part, we created this issue in honor of all of you. We never knew what incredible human beings existed out there until we founded this publication. You, you readers, writers, and artists, you who continue to amaze us through not only your profundity but your sincere spirits, gave us a steadfast faith in who people can be. It gives us perspective in an uncertain time like this. You entrusted us to collect, publish, and archive proof of humanity at its height—and it's all here in front of us. Through this publication that is a part of all of you, we see how people around the world, across faiths, cultures, views, orientations, ages, and continents are deeply connected. Let us try, in our own humble way, to return that faith, that hope to you.

We've been told over the years by a few readers that even when they've finished reading an issue's content, they come back to visit the website during the day just to look at it because it brings them peace. When things seem dark, confused, or chaotic, look here to read the truth of yourself, of those with whom you share a kindred spirit. See what we see in you—the glory and the goodness. If you forget how much you matter in the grand scheme of things, start small and simple by remembering how much you matter to us. It may not be a great comfort when none of us can know what's to come, but know we care. Know that if you've been published here once, if you've read one piece of our publication and felt something, you're a part of this family.

Anyone for fairness, compassion, inclusion, relating—you are our kind of person.

You will always have a place, you will always have a home here. Let's walk down the pages of these days together, each step another word imprinted. To you, we extend our hand...

With the intention of creating an issue that would strive to both ask the right questions and offer some of the "write" answers, we looked to our incredible network of authors to provide statements and insights. We were able to compile a dynamic grouping of eight authors—best-sellers, instructors, and award-winners—who, together on one page, share their thoughts, reactions, outlooks, feelings, wisdom, and input. Erica Bauermeister, Janet Fitch, Gwendolen Gross, Frances Mayes, Thomas C. Foster, Alice Hoffman, Don Wallace, and Renée Ashley, have come to be here with you.

You will read responses in the form of statements, answers to questions, personal essays, and exercises for you to try. Discover what resonates.

We discuss using our individual and collective voices to sing the beauty of our truth. We excavate a deeper link to humanity and a stronger, empathic awareness of the struggles of others. We acknowledge the need to step outside to go within, recognizing that we are never alone as we travel "the same storied earth." We are reminded to contribute to our communities, expanding the circle of positive actions ever-outward. We are invited to look at different perspectives with the idea of remembering to see people instead of just views. We mend our sails in the safe harbor of a journal page. We use art as a life compass to find our way. Finally, we discern the light in the shadow of fear and, sorting through chaotic tangles of emotion, we make room for what *does* fit us.

Overview: The winter-spring issue is both response and reflection. The Interviewee Insights page is a feast of words for the hunger of the times. The poetry section features powerfully emotive poetry that represents a range of contemporary thought. The fiction section speaks of love overcoming limits and the courage in kindness. The Our Stories non-fiction page focuses on empathy, equality, friendship, and connection. Our Craft Box page features pieces exploring the significance of reading and writing,

along with the new Writers' Challenge that has a prize designed to give back and make a difference. The artwork beckons us to dive into the depths of discovered meaning. Join us!

Highlights:

The spring-summer issue is scheduled to be released on 5/22. 5/22, 9/22, and 1/22 will be our publication schedule going forward with reminders and updates sent out accordingly.

In this edition of Writers' Craft Box—a section of the magazine dedicated to giving writers tools, essays, features, and contests to enter—we have pieces articulating the personal and universal importance of reading and writing, in addition to a special Writers' Challenge. The creation of the contest was a collaborative effort. Given the spirit of this issue, working to meld different ideas for a good purpose, seems rather appropriate. The prompt involves the idea of new beginnings and the spring equinox theme of transformation.

This Challenge welcomes entries in the form of poems, short stories, art, photography, and short films. In the hopes of joining the tide of positive actions out there, the prize is designed to support the causes and charities that better our world. We will donate \$50 in the name of the winner to an altruistic organization of their choice. Enter for a chance to make your mark.

We have a newly established Pinterest account created for this issue, thoughtfully curated by Assistant Editor, Denise Bouchard. Visit our board, Wisdom Through the Ages, in addition to our growing board, On Writing. We intend to utilize this Pinterest presence for future issues in the form of providing prompts, inspiration around issue themes, and further creative purposes. Stop by and join us at pinterest.com/wpwt/!

We have an Archives page where readers and writers can trace our artistic journey from the beginning and re-read the philosophies of writers such as the authors we mention above who've returned for this issue, as well as past interview subjects, including Tracy Chevalier, Dennis Lehane, Joanne Harris, Arthur Golden, Jodi Picoult, Mona Simpson, and many, many more!

We also have a Scrapbook page celebrating eight years as a publication with words from our contributors for each year. This page celebrates the magazine community with commentary from our contributors and a list of the countries around the world that have readers we've reached. Read reflections on the latest anniversary.

Please send in new announcements to appear in the next issue by April 15th for the Announcements page. We encourage all contributing writers and artists to tell us of their news; we love to support our *WPWT* veterans as they accomplish great things on their creative paths. We wish to showcase the amazing diversity of activity that takes place amongst the members of our magazine realm, and we also like to give news of our publication to our readership. Announcements can be sent to our submissions e-address.

We have a presence on Facebook via our fan page which offers insights, quotes, tools, resources and updates. Visit Facebook.com and stop by The-Write-Place-at-the-Write-Time-literary-journal page. Follow our Twitter account through @WriteplcWritetm. ***You can also join our e-mail list by providing your e-mail address along with the words "ADD ME" through our feedback form on the Feedback and Questions page.

Inscribing Industry is our associated blog, featuring exercises, articles, book giveaways, special features, reviews and interviews. Check out the results of our October contest, the image that inspired it, and the winning entry from Neal Whitman. Click on the *Inscribing Industry* tab to go there directly or visit:

<http://inscribingindustry.blogspot.com> and become a follower!

We are a triannual publication (published three times a year), established in July of 2008. We are listed on the *Poets & Writers* site (www.pw.org) under literary magazines. Clicking on our listing describes our publication, past issues, and our editorial focus. We are also listed on *Newpages.com*, *EWR*, *Duotrope Digest*, *Agentquery.com*, *P&E* and *The Review Review*. To read more about our philosophies and approach, you can read the interview of our Editor-in-Chief in *The Review Review*:

<http://www.thereviewreview.net/interviews/there-blending-culturesgenerations-and-countries>

Our next issue will be our spring-summer issue due out 5/22. If you have any questions, please write to: questions (at) thewriteplaceatthewritetime (dot) org.

Tweet

"Darkness cannot drive out darkness; only light can do that. Hate cannot drive out hate; only love can do that." —Dr. Martin Luther King, Jr.

© 2017 *The Write Place at the Write Time*
This online magazine and all the content contained therein is copyrighted.