

## [The Write Place At the Write Time](#)

[Home](#)

[About Us](#)

[Fiction](#)

[Poetry](#)

[Interviews](#)

["Our Stories" non-fiction](#)

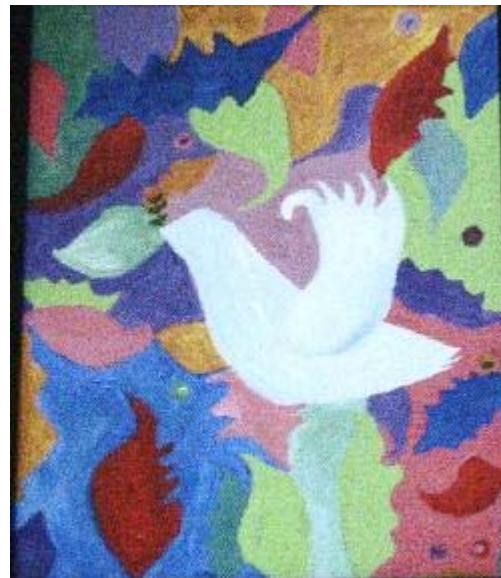
[Book Discussion Forum](#)

[Submission Guidelines](#)

[Feedback & Questions](#)

### Come in...and be captivated...

Welcome to ***the write place at the write time***. Imagine that you are seated comfortably in a chic café with the décor of your choice. In the time it takes you to consume the generous warm mug of coffee or tea cradled between your hands, you can step into another world, abandon your senses and delve into another space and time. You do this by allowing a mysterious stranger to pull up a chair across from you and tell you a story. Close your eyes, listen to the words in your mind and be swept away...



"Peace" N.M.B Copyright 2007

Welcome to our exciting debut issue- we are thrilled to have you with us! Our publication includes not only fiction, non-fiction, poetry, original photos and artwork, but also interviews with professionals from the literary world as well as selected artists from other fields who use writing as a part of their craft. This month we have widely acclaimed author of *Writing from the Heart* and founder of the Chilmark Workshop, **Nancy Slonim Aronie**, and poignant best-selling novelist **Janet Fitch**, author of *White Oleander* and *Paint it Black*, who tell us about their interpretations of the power of the written word. Take a comfortable seat and get ready to explore!

"I shall tell you what I believe. I believe that God is a librarian. I believe that literature is holy, Mr. Roper, it is that best part of our souls that we break off and give each other and God has a special dispensation for it angels to guard

and give each other, and God has a special dispensation for it, angels to guard its making and its preservation"- from *Chasing Shakespeares* by novelist, Sarah Smith

© 2008 *The Write Place At the Write Time*

This on-line magazine and all the content contained therein is copyrighted.