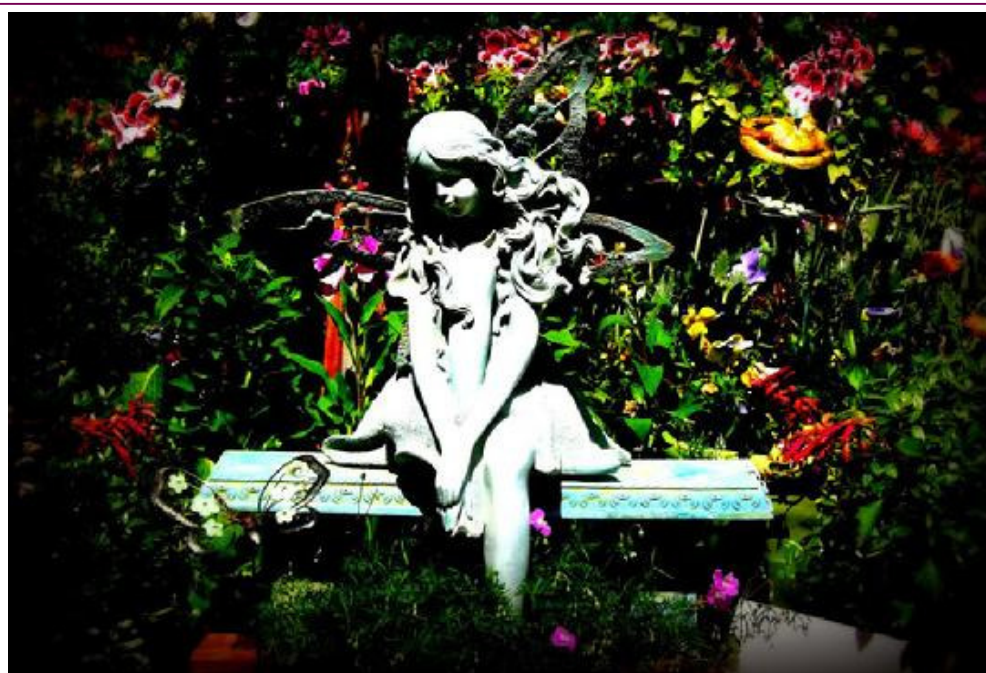


## [The Write Place At the Write Time](#)

[Home](#)[About Us](#)[Announcements](#)[Interviews](#)[Fiction](#)[Poetry](#)["Our Stories" non-fiction](#)[Writers' Craft Box](#)[Submission Guidelines](#)[Feedback & Questions](#)[Artists' Gallery](#)[Indie Bookstores](#)[Literary Arts Patrons](#)[Scrapbook of Seven Years](#)[Archives](#)[Inscribing Industry Blog](#)

Come in...and be captivated...

"Fairy" by C. Michelle Olson; <http://cmichelleolson.com/>

*About this image: "I am always inspired when I come across a fairy for the lighthearted happiness they represent to people. Fairies represent beauty and femininity. Women represent beauty and strength and need to be reminded of that—this photo accomplishes that purpose. The wings symbolize freedom and liberation which women have gained throughout history into present day society."—CMO*

From the Editorial Staff at *The Write Place At the Write Time*:

We are an online literary magazine published three times a year whose mission is to move our readers with fiction, personal non-fiction and poetry that speaks deeply to the heart and mind. We have a humanitarian approach to the arts, giving a personalized touch to the literary experience. This publication includes not only fiction, "Our Stories" non-fiction, poetry, writer resources, book reviews, original photos and artwork, but also interviews with best-selling authors and creative professionals who utilize writing in their craft. Our writers range from previously unpublished to having written for *The New Yorker*, *Newsweek*, *The Wall Street Journal*, *Time* magazine, *Glimmer Train*, *The Southern Review*, *Georgetown Review*, *Worcester Review*, *Gettysburg Review* and Random House. We encourage the atmosphere of a warm, welcoming writing community.

In terms of our submission guidelines, we consider literary and most genres of fiction, personal essay and poetry; however, no erotica, no political content, no juvenile stories at present, and no explicit or needless violence. In short, tell a story that leaves a powerful, lingering impression in the reader's mind whether through three-dimensional characters, plot arch, voice or a combination thereof, but please avoid sending us anything so disturbing that it keeps us up at night. Use sound literary judgment.

**For fiction:** We consider up to three short fiction pieces per writer, per issue. Individual works should not typically exceed 3,500 words, however, if necessary for plot, we will consider rare exceptions.

**For poetry:** We consider up to five poems per writer, per issue. Individual poems should not exceed thirty lines, however, if we feel the strength of the poem merits added length, we are happy to consider exceptions.

**For non-fiction:** We consider up to three submissions per writer, per issue (max. 3,500 words for each individual piece—see above for philosophy on added length); our non-fiction section features personal essays done in a memoir-style. Capture a memory, a moment, a place, person or event that tells your story while speaking the universal language of the human experience.

**For all submissions:** Please include a cover letter and the story in the body of the e-mail; please try to avoid using the tab button to indent paragraphs as it affects the electronic format. **No attachments.** The cover letter should include a brief author bio, contact info (both e-mail and phone

preferred), word count, and a summary of the story. It should be sent to:  
[submissions@thewriteplaceatthewritetime.org](mailto:submissions@thewriteplaceatthewritetime.org).

Accepts multiple submissions. *No reprints (this includes work posted on personal websites/blogs/social media)*. Though we don't necessarily encourage simultaneous submissions, we certainly do accept them. If a submission is simultaneous, please indicate that it is such when submitting and notify us immediately if it is accepted elsewhere; if we express an interest in publishing it, we require an e-mail stating that it has been withdrawn from the consideration of fellow publications as a courtesy to both us and the other publications.

For photos/artwork: Jpeg (JPG) files if requested. Please send cover letter first to:  
[submissions@thewriteplaceatthewritetime.org](mailto:submissions@thewriteplaceatthewritetime.org).

Terms: We are currently a free online magazine accessible to many readers, so accepted writers can expect exposure, recognition and a good home for their work in terms of compensation. We acquire electronic, archive and one-time reprint rights. We require a basic written (e-mail) acknowledgment of our acquiring these rights upon the acceptance of your story/submission.

© 2015 *The Write Place At the Write Time*  
This on-line magazine and all the content contained therein is copyrighted.