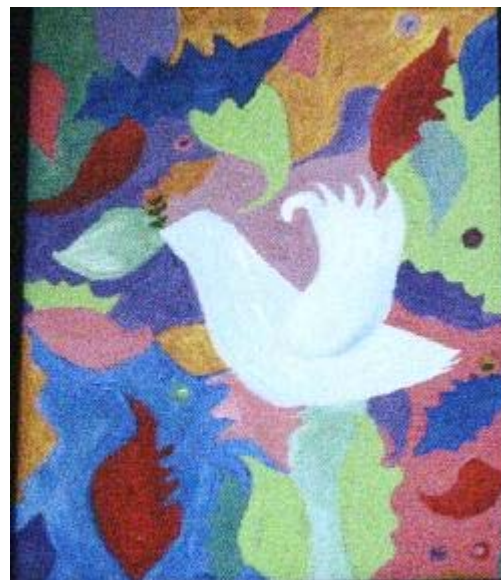


[The Write Place At the Write Time](#)

[Home](#)[About Us](#)[Interviews](#)[Fiction](#)[Poetry](#)["Our Stories" non-fiction](#)[Writers' Craft Box](#)[Jungian Dream Corner](#)[Submission Guidelines](#)[Feedback & Questions](#)

Come in...and be captivated...

Welcome to ***the write place at the write time***. Imagine that you are seated comfortably in a chic café with the décor of your choice. In the time it takes you to consume the generous warm mug of coffee or tea cradled between your hands, you can step into another world, abandon your senses and delve into another space and time. You do this by allowing a mysterious stranger to pull up a chair across from you and tell you a story. Close your eyes, listen to the words in your mind and be swept away...



"Peace" N.M.B Copyright 2007

A Warm Invitation to Our Readers

As the cool winds blow in and the seasons change, we invite you into the glowing warmth of our autumn issue! If you are new to our site we warmly welcome you and to those have been with us since our debut, welcome back! Our quarterly publication includes not only fiction, non-fiction, poetry, original photos and artwork, but also interviews with professionals from the literary world as well as selected artists from other fields who use writing as a part of their craft.

This month we have deeply insightful author, Alice Hoffman, with us to discuss writers' passion, themes of life and fiction, her new novel, *Third Angel*, and we

get to go behind the scenes of one of her best-selling novels, *Practical Magic*, adapted into the film starring Sandra Bullock and Nicole Kidman. Her large, brilliant body of work includes novels such as *Ice Queen*, Oprah Book Club selection- *Here on Earth*, *Blackbird House*, *Local Girls* and the young adult best-seller *Aquamarine*, also adapted into a Hollywood film.

We are honored to have an international guest with us as well- Gerald Dawe, Senior Lecturer of English and Director of the Oscar Wilde Centre for Irish writing, from the famed Trinity College Dublin, in Ireland. With a nearness to the legendary Trinity College Library which holds some of the world's most ancient volumes, such as the *Book of Kells*, Dawe gives us an insider's view to the modern literary landscape of Ireland, a timeless, historically significant campus and the importance of the creative writing work writers do.

We also have a new feature titled "Writer's Craft Box" which features writers' hints, tools and advice. Think of it as an arts and crafts box full of colors and inspiration... or an old toy chest discovered in the attic on a rainy day... In the spirit of excavating our authentic creative selves, we also have the Jungian Dream Corner where fellow readers and writers can help decipher your dreams in keeping with the theme of a deeply artistic, creative and interactive environment, a Reader's Interest poll, and a Feedback form which we encourage you to use.

With the coming holiday season full of mirth and magic, we are happy to be your creative companions to entertain, enliven and inspire while you sit curled up by the crackling fireplace of your imagination...

A Thanksgiving Blessing to Our Writers

By Denise Bouchard

Come gather round our table,
let us offer thanks for our writers' community.

Let us be grateful for the warm sharing, the opening of our hearts

and the knowledge that we all, as creative individuals, are not alone.

Grant us grace for all of our works both on a personal level
and our work here at *The Write Place At the Write Time*.

Let our works go out into the world in ever widening circles,
allowing our combined energies to make the world a better place
in a difficult time.

Let us provide one another a safe harbor and to the world,
the gift of a rich and bountiful harvest for its hungry heart.

"The truth seems to be, however, that, when he casts his leaves forth upon the wind, the author addresses, not the many who will fling aside his volume, or never take it up, but the few that will understand him, better than most of his schoolmates and lifemates." - Nathaniel Hawthorne

© 2008 *The Write Place At the Write Time*
This on-line magazine and all the content contained therein is copyrighted.