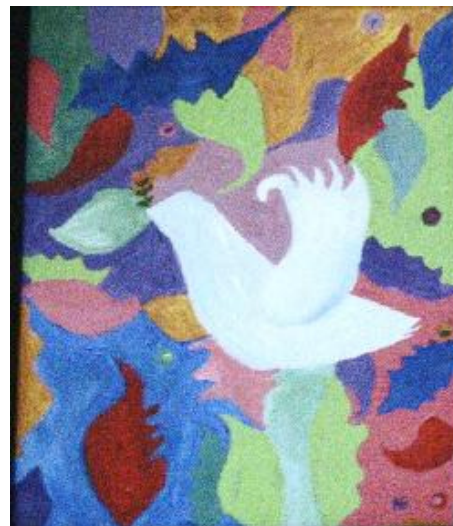


## [The Write Place At the Write Time](#)

[Home](#)[About Us](#)[Interviews](#)[Fiction](#)[Poetry](#)["Our Stories" non-fiction](#)[Writers' Craft Box](#)[Writers' Contest!](#)[Exploration of Theme](#)[Archives](#)[Submission Guidelines](#)[Feedback & Questions](#)

### Come in...and be captivated...

Welcome to ***the write place at the write time***. Imagine that you are seated comfortably in a chic café with the décor of your choice. In the time it takes you to consume the generous warm mug of coffee or tea cradled between your hands, you can step into another world, abandon your senses and delve into another space and time. You do this by allowing a mysterious stranger to pull up a chair across from you and tell you a story. Close your eyes, listen to the words in your mind and be swept away...



"Peace" N.M.B Copyright 2007

### ***Autumnal Season's Greetings...***

In our last issue, we celebrated our one year anniversary together and reflected on twelve months of creative wonders. Now we embark on nature's journey into autumn as the season changes with jewel-toned leaves, brisk air, and a renewed sense of anticipation as the holiday season approaches. If the decor and playfulness of the holidays doesn't enchant, the food will. First Halloween, with its mystical, marvelous confections, then Thanksgiving with pumpkin pie, turkey, stuffing, numerous homemade courses and leftovers in the fridge which seem to be most fun when consumed at odd times of the night with a glass of milk. We encourage you to harvest the fruits of your creative labors and focus on enjoying yourself these next few months as we go into the season of change and opportunity.

This issue, we walk the beach with best-selling author, Joan Anderson, (author of *A Year by the Sea*, *An Unfinished Marriage*, *A Walk on the Beach*, *The Second Journey* and *A Weekend to Change Your Life*) who has appeared on The Today Show, Oprah and Good Morning America. Ms. Anderson makes us embrace freedom, autonomy, and the wild aspect of nature which serves to not only spiritually instruct, but to awaken us as well.

We have a **special edition** "Writers' Craft Box" which features snippets of creative conversation with best-selling author, Elizabeth Berg. She shares with us her views, influences, and gives a glimpse of what the future holds for her expanding creative endeavors. There is also an essay by one of our contributing writers discussing the reassuring theme of persistence. "Writers Craft Box" is a section dedicated to giving writers' hints, tools, essays and advice. Think of it as an arts and crafts box full of colors and inspiration... or an old toy chest discovered in the attic on a rainy day...

We have an ARCHIVES page where readers and writers can trace our artistic journey from the beginning and re-read the wisdom of writers such as best-selling novelists Janet Fitch, Alice Hoffman and more! We have a Feedback form which we **encourage** you to use and the results of the **Writers Contest!** designed for you by spring's winning 1st place writer to check out.

We'd like to make a few announcements and thereby 'announce' that we'd like to formulate an Announcements page for ongoing issues- we love to celebrate and support our contributing artists and writers as they accomplish great things on their creative paths and we also like to give news of our publication to the readership. Recently, Editor-in-Chief, Nicole M. Bouchard, was interviewed on a cable television program profiling Creative Women. The show began airing Thursday, September 10th and will continue for the consecutive Thursdays and Fridays of September. Ms. Bouchard has also been admitted to The National League of American Pen Women.

Contributing writer, Linda Emma, published her first novel, *Prime Meridian* and recently had a book signing at Borders Bookstore. Renaissance artist Denise Morris Curt, is holding the 47th Meet the Artists and Artisans show Sept 26-27th. Juried fine artists of varied mediums and unique handcrafters from throughout the country are featured as well as musicians and the live demonstrations of the artists and artisans. Artist Ken Steinkamp has a new upcoming solo exhibition, entitled, *Tethered*, which runs through late

September into mid-October. (Please click on the artwork of the artists to be guided to their site if you'd like more info on the upcoming events.) We encourage **all** contributing writers and artists to tell us of their news so that we can assemble a page that keeps updates on such news items.

We are a quarterly publication listed on the Poets & Writers site ([www.pw.org](http://www.pw.org)) under literary magazines. Clicking on our listing describes our publication, past issues, and our editorial focus.

Our next issue will be the winter issue, due out Dec. 22nd. Submissions deadline for the winter issue is Dec. 1st. Please check the submissions guidelines page before submitting and if you have any questions, please write to: [questions@thewriteplaceatthewritetime.org](mailto:questions@thewriteplaceatthewritetime.org)

"If you do not breathe through writing, if you do not cry out in writing, or sing in writing, then don't write, because our culture has no use for it..."- Anais Nin

© 2009 *The Write Place At the Write Time*

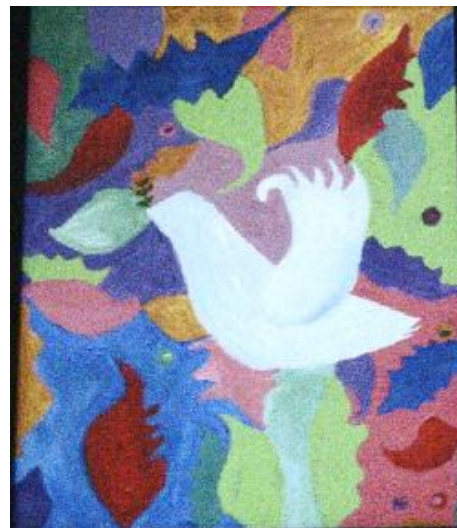
This on-line magazine and all the content contained therein is copyrighted.

## [The Write Place At the Write Time](#)

[Home](#)[About Us](#)[Interviews](#)[Fiction](#)[Poetry](#)["Our Stories" non-fiction](#)[Writers' Craft Box](#)[Writers' Contest!](#)[Exploration of Theme](#)[Archives](#)[Submission Guidelines](#)[Feedback & Questions](#)

### Come in...and be captivated...

Welcome to ***the write place at the write time***. Imagine that you are seated comfortably in a chic café with the décor of your choice. In the time it takes you to consume the generous warm mug of coffee or tea cradled between your hands, you can step into another world, abandon your senses and delve into another space and time. You do this by allowing a mysterious stranger to pull up a chair across from you and tell you a story. Close your eyes, listen to the words in your mind and be swept away...



"Peace" N.M.B Copyright 2007

### ***Autumnal Season's Greetings...***

In our last issue, we celebrated our one year anniversary together and reflected on twelve months of creative wonders. Now we embark on nature's journey into autumn as the season changes with jewel-toned leaves, brisk air, and a renewed sense of anticipation as the holiday season approaches. If the decor and playfulness of the holidays doesn't enchant, the food will. First Halloween, with its mystical, marvelous confections, then Thanksgiving with pumpkin pie, turkey, stuffing, numerous homemade courses and leftovers in the fridge which seem to be most fun when consumed at odd times of the night with a glass of milk. We encourage you to harvest the fruits of your creative labors and focus on enjoying yourself these next few months as we go into the season of change and opportunity.

This issue, we walk the beach with best-selling author, Joan Anderson, (author of *A Year by the Sea*, *An Unfinished Marriage*, *A Walk on the Beach*, *The Second Journey* and *A Weekend to Change Your Life*) who has appeared on The Today Show, Oprah and Good Morning America. Ms. Anderson makes us embrace freedom, autonomy, and the wild aspect of nature which serves to not only spiritually instruct, but to awaken us as well.

We have a **special edition** "Writers' Craft Box" which features snippets of creative conversation with best-selling author, Elizabeth Berg. She shares with us her views, influences, and gives a glimpse of what the future holds for her expanding creative endeavors. There is also an essay by one of our contributing writers discussing the reassuring theme of persistence. "Writers Craft Box" is a section dedicated to giving writers' hints, tools, essays and advice. Think of it as an arts and crafts box full of colors and inspiration... or an old toy chest discovered in the attic on a rainy day...

We have an ARCHIVES page where readers and writers can trace our artistic journey from the beginning and re-read the wisdom of writers such as best-selling novelists Janet Fitch, Alice Hoffman and more! We have a Feedback form which we **encourage** you to use and the results of the **Writers Contest!** designed for you by spring's winning 1st place writer to check out.

We'd like to make a few announcements and thereby 'announce' that we'd like to formulate an Announcements page for ongoing issues- we love to celebrate and support our contributing artists and writers as they accomplish great things on their creative paths and we also like to give news of our publication to the readership. Recently, Editor-in-Chief, Nicole M. Bouchard, was interviewed on a cable television program profiling Creative Women. The show began airing Thursday, September 10th and will continue for the consecutive Thursdays and Fridays of September. Ms. Bouchard has also been admitted to The National League of American Pen Women.

Contributing writer, Linda Emma, published her first novel, *Prime Meridian* and recently had a book signing at Borders Bookstore. Renaissance artist Denise Morris Curt, is holding the 47th Meet the Artists and Artisans show Sept 26-27th. Juried fine artists of varied mediums and unique handcrafters from throughout the country are featured as well as musicians and the live demonstrations of the artists and artisans. Artist Ken Steinkamp has a new upcoming solo exhibition, entitled, *Tethered*, which runs through late

September into mid-October. (Please click on the artwork of the artists to be guided to their site if you'd like more info on the upcoming events.) We encourage **all** contributing writers and artists to tell us of their news so that we can assemble a page that keeps updates on such news items.

We are a quarterly publication listed on the Poets & Writers site ([www.pw.org](http://www.pw.org)) under literary magazines. Clicking on our listing describes our publication, past issues, and our editorial focus.

Our next issue will be the winter issue, due out Dec. 22nd. Submissions deadline for the winter issue is Dec. 1st. Please check the submissions guidelines page before submitting and if you have any questions, please write to: [questions@thewriteplaceatthewritetime.org](mailto:questions@thewriteplaceatthewritetime.org)

"If you do not breathe through writing, if you do not cry out in writing, or sing in writing, then don't write, because our culture has no use for it..."- Anais Nin

© 2009 *The Write Place At the Write Time*

This on-line magazine and all the content contained therein is copyrighted.